

**DEAKIN  
COLLEGE**  
in association with



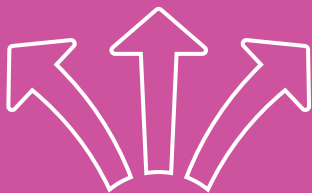
# 2026 International Student Guide

---

Melbourne and Geelong



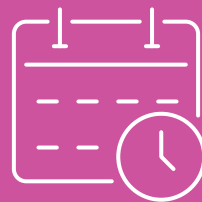
# Your future starts right here



The direct pathway to achieving a Deakin University degree.



Supportive study environment designed to help you succeed.



Fast track study options available. Complete your course in eight or twelve months.



More than 22,000 students have progressed into a Deakin University degree.



Pathways to #1 Victorian university for graduate employment.\*



Deakin University is ranked in the top 200 universities worldwide^.

^2025 QS World University Rankings.

\*2023 Graduate Outcomes Survey, Quality Indicators for Learning and Teaching.



## Contents

- 1 Your future starts right here
- 3 Welcome
- 5 Why choose Deakin College?
- 6 Your pathway to Deakin University
- 7 Why Deakin?
- 8 Shape your future
- 9 Deakin College locations
- 11 Student life and support services
- 13 Accommodation
- 14 Care of students under the age of 18
- 15 Deakin College Foundation Program
- 17 Choose your course
- 19 Diploma of Business
- 21 Diploma of Commerce
- 23 Diploma of Communication
- 25 Diploma of Design
- 27 Diploma of Engineering
- 29 Diploma of Film, Television and Animation
- 31 Diploma of Health Sciences
- 33 Diploma of Information Technology
- 35 Diploma of Science
- 37 Academic entry requirements
- 39 English language
- 40 Key terms
- 40 Academic calendar
- 41 How to apply to Deakin College
- 42 Scholarships



# Welcome

## Message from the President and Vice-Chancellor of Deakin University

Congratulations on your decision to study at Deakin College.

Deakin College graduates receive the very best preparation for a successful university career. You'll find that your experience with us encourages the collaborative and independent learning that will prepare you for a life and career in this rapidly changing world.

Deakin College provides a technology-rich and inclusive learning environment, helping all students to succeed. As part of a diverse university community, students benefit from our strengths in education and research, and we offer experiences that challenge and inspire.

Since 1996, Deakin College has given more than 22,000 students the opportunity to progress into a degree program at Deakin. We look forward to welcoming you when you complete your studies at Deakin College.

**Professor Iain Martin**  
President and Vice-Chancellor,  
Deakin University



## Message from the College Director and Principal of Deakin College

As College Director & Principal, I am honoured to welcome you to Deakin College; a direct pathway to Deakin University. Deakin College provides the Deakin student experience that supports successful transition to further studies at the University.

As a commencing student of Deakin College, you will benefit from a number of advantages in your studies involving our flexible approach to teaching and learning, individualised student support, digital technologies and a wider suite of course offerings at Deakin University.

The College will also provide a quality student experience and superior student outcomes while reflecting the continuously growing reputation of Deakin University. We are committed to giving you every opportunity to succeed in your studies, and I invite you to take the first step with confidence towards achieving your educational goals with Deakin College.

As College Director & Principal, I would like to assure you of a rewarding and productive academic journey; starting at Deakin College to Deakin University and beyond.

**Hamid Khattak**  
College Director and Principal,  
Deakin College





"Melbourne is beautiful. The city is vibrant, the coffee culture is well known and Deakin University is number one in graduate employment, with multiple options for your choice of degree."

**Resha Salih**  
Diploma of Business

### **Our mission**

To deliver a world-class student experience through innovative practices, outstanding people and personalised support.

---

### **Our vision**

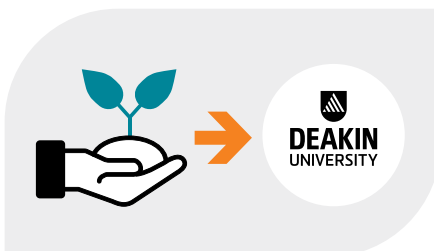
To be a global leader in quality education.

# Why choose Deakin College?



## Located on Deakin campuses

Study on a Deakin University campus with full access to accommodation, support services and university facilities.



## Supportive learning environment

You will have access to health services and free study support, as well as online resources to assist with study and writing skills, assignment preparation and examination techniques – all designed to help you transition smoothly to Deakin University degrees.



## Flexible start dates

With three intakes per year, you can choose to enter a course when it is convenient for you. Deakin College offers three trimesters, commencing in March, June and October.

Deakin's preferred  
pathway provider  
with guaranteed entry  
into second year of  
the bachelor degree\*





### Fast-track options

Deakin College diploma courses offer a fast-track option, allowing you to complete a program in just eight months. This makes it possible to enter university much earlier than students studying in a conventional pathway program.



### Small class and tutorial groups

Small class sizes are one of the benefits of studying at Deakin College. With a maximum of 30 students per class, complemented by small group tutorials and workshops, you will receive intensive academic contact and support.

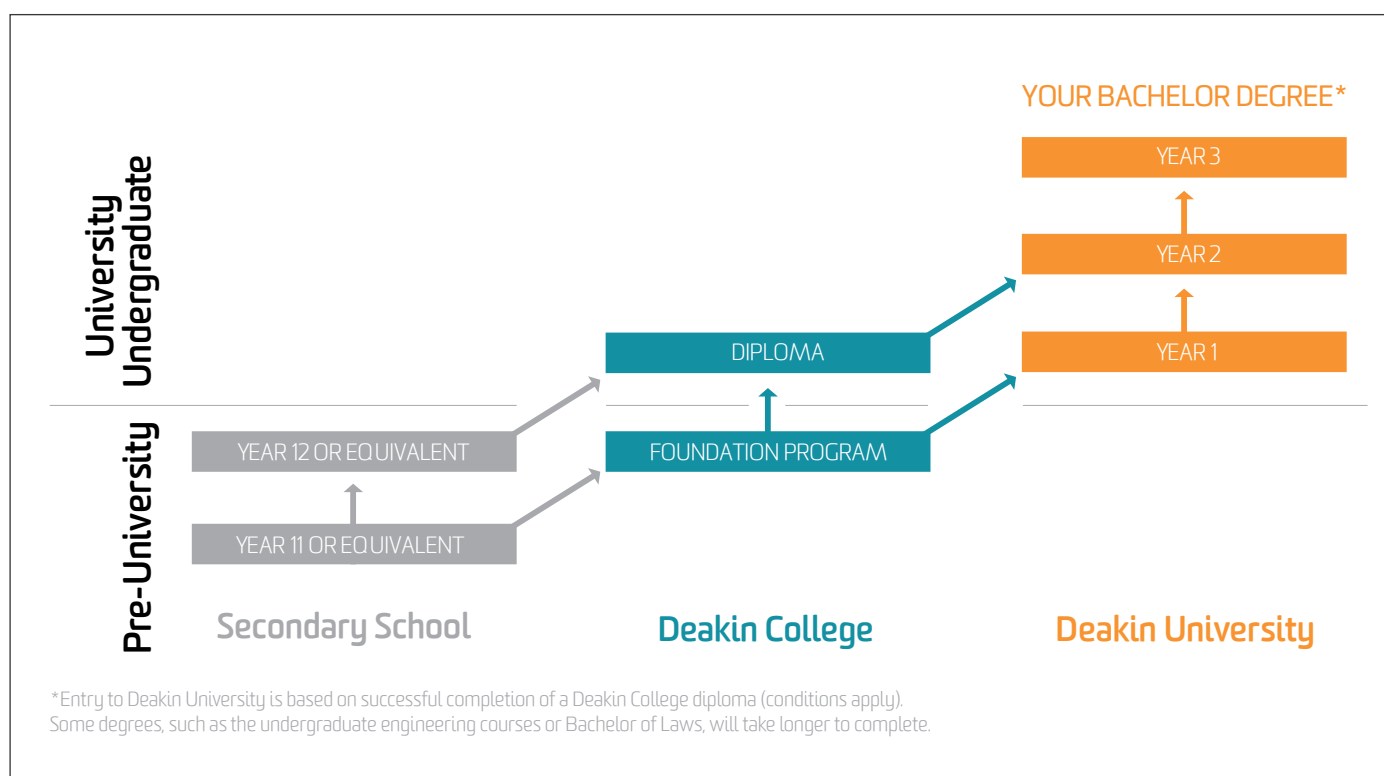


### Convenient transport

All Deakin College campuses are conveniently located and easily accessible by public transport. For more information on public transport in Melbourne and Geelong.

[ptv.vic.gov.au](http://ptv.vic.gov.au)

# Your pathway to Deakin University





# Why Deakin?

Join a world-class university and be ready to take on tomorrow with confidence. At Deakin you won't just learn about the future, you'll prepare for it with real-world learning fuelled by progressive thinking. Choose a practical, industry-shaped course and launch a career with impact.

**TOP 1%**  
OF UNIVERSITIES  
WORLDWIDE<sup>#</sup>

**#1 UNIVERSITY  
IN MELBOURNE**  
FOR GRADUATE EMPLOYMENT  
AND COURSE SATISFACTION<sup>\*</sup>

A REPUTATION FOR  
**STUDENT  
SUPPORT<sup>^</sup>**

<sup>#</sup>2025 QS World University Rankings.

<sup>\*</sup>2023 Graduate Outcomes Survey, Quality Indicators for Learning and Teaching.

<sup>^</sup>2023 Student Experience Survey, Quality Indicators for Learning and Teaching: #1 Victorian university for student support.





# Shape your future

## Skills to get you a job

Strengthen your employment prospects and gain a competitive edge in the workplace by learning in-demand, real-world skills that employers are looking for.

From our \$55 million engineering training facility to our dedicated studios and hi-tech equipment for the creative arts, you'll gain the expertise to become one of our highly sought-after graduates.

## Get work-ready with our industry connections and work placements

Our close ties with industry mean that you get:

- courses shaped by industry experts and matched to current industry practice
- a well-recognised qualification that stands out to employers

Many of our courses offer:

- workplace internships
- placements
- work-integrated learning programs

You'll get your career off to the best start by gaining skills, knowledge and networks through work experience – and earn credit towards your degree at the same time.

## We'll support your learning

At Melbourne's #1 university for course satisfaction\*, you will be encouraged to explore your passions and empowered to succeed. Whether you'd like to improve your study skills or get help with a tricky assignment, there's plenty of support available. Turn to our student mentors, online resources and highly qualified staff. Our premium online learning platform gives you the autonomy to manage your enrolment and course material, communicate with your classmates and teachers, sort out your timetable and plan your career.



## Learn from leaders in their field

Our outstanding academic staff are active participants and influencers in their fields. They share their skills and knowledge and give you valuable industry insights.

## Access state-of-the-art facilities

Work with tomorrow's technology today in our inspiring learning environments, where you can:

- walk through virtual landscapes
- prototype ideas with 3D printing
- trade stock in a simulated trading room
- merge movement and art in our motion capture lab
- use a climate chamber to simulate extreme conditions of temperature, humidity, altitude and oxygen levels.

## International study experiences

Expand your horizons by joining a virtual global learning program or an international internship, exchange, study tour or volunteer placement. Gain a competitive edge in the workplace and get credit towards your degree by studying abroad at a Deakin partner university, located in more than 40 different countries. Visit [deakin.edu.au/overseas-study](https://deakin.edu.au/overseas-study) for more information on where your Deakin degree can take you.

For up-to-date and additional information visit:  
[deakin.edu.au/about-deakin/why-deakin](https://deakin.edu.au/about-deakin/why-deakin)

# Deakin College locations

Deakin College has three Deakin University campuses in the state of Victoria. One is in metropolitan Melbourne and the other two are in Geelong.



MELBOURNE

GEELONG

## Melbourne, Australia

Victoria's capital city, Melbourne, is recognised as one of the world's most liveable cities. Melbourne is a friendly, multicultural city, offering world-class entertainment, dining, beautiful gardens and excellent shopping within the CBD and sprawling suburbs, each with their own unique character and hidden gems to discover.

Situated on Australia's south-east coast, Victoria's dramatic coastlines, deserts, snowfields, and mountains, are all within easy reach. Explore countless beaches and idyllic towns dotted around the state and visit the Mornington Peninsula to partake in the region's renowned wine, food, culture and activities.



Burwood campus

### Melbourne Burwood Campus

The Melbourne Burwood Campus is Deakin University's largest campus. The site is continually evolving to match students' needs both in and outside of the classroom. Students enjoy abundant learning and social areas in a relaxed atmosphere.

### Getting to Burwood

Easily accessible, the Campus sits between the Lilydale/Belgrave, Glen Waverley and Alamein train lines. A number of bus routes and tram lines service the campus, as well as a network of bike paths.

[ptv.vic.gov.au](http://ptv.vic.gov.au)





# Geelong, Australia

Only an hour from central Melbourne, Geelong is Victoria's second largest city. With all the modern amenities including excellent cafés, restaurants, shopping and recreational facilities, and close to some of the best surf beaches on earth, Geelong offers a clean, healthy and relaxed living environment.

Geelong's surrounding areas offer their own entertainment and discovery. Tours and incredible day trips to the world-famous Great Ocean Road offer everything from sleepy coastal towns to incredible food, views and activities.



Waterfront campus

## Geelong Waterfront Campus

The Geelong Waterfront Campus is located in the central business district of Geelong. A modern, impressive campus centre with creative areas to catch up or study, striking heritage architecture and views of the spectacular shores of Corio Bay make the Geelong Waterfront Campus a truly iconic site.

## Getting to Geelong, Waterfront

The campus is in the centre of Geelong, Victoria's second-largest city. It is just 400m away from Geelong station, which is about one hour from Melbourne and two and a half hours from Warrnambool by train.

[ptv.vic.gov.au](http://ptv.vic.gov.au)

You can also catch a suburban bus to campus, or to the bus interchange on Moorabool Street, just 700m from campus.

Deakin provides a convenient, free shuttle bus between the Geelong Waurn Ponds and Waterfront campuses.

## Want more campus info?

Campus maps and more information can be found at:  
[deakincollege.edu.au/about](http://deakincollege.edu.au/about).

If you would like to book a tour of one of Deakin's campuses, please email:  
[deakincollege@deakin.edu.au](mailto:deakincollege@deakin.edu.au)

## Geelong Waurn Ponds

Waurn Ponds is home to cutting-edge facilities such as Carbon Nexus, Centre for Advanced Design in Engineering Training (CADET) and Deakin Medical School, all set amongst expansive grounds that encourage students to make the most of outdoor space.

## Getting to Geelong, Waurn Ponds

The campus is at the start of the Great Ocean Road. The closest train station is Geelong Waurn Ponds, which is about an hour and a half from Melbourne's city centre. From there, you can catch route 41 or 42 buses directly to Deakin College Waurn Ponds campus in under 10 minutes.

[ptv.vic.gov.au](http://ptv.vic.gov.au)



Waurn Ponds campus



# Student life and support services

At Deakin College, we recognise the importance of meeting both your academic and personal needs. We offer a range of services and facilities to make your time at Deakin College as enjoyable as possible. Our qualified staff will also support you as you adjust to studying in a new environment.

## Orientation and Enrolment

Orientation and enrolment programs commence the week before each trimester. You will meet your teachers, receive your student ID card and learn about enrolling in classes and creating a timetable. More information will be provided with your letter of offer. Attendance is compulsory.

[deakincollege.edu.au/future-students/week-one/orientation-enrolment](https://deakincollege.edu.au/future-students/week-one/orientation-enrolment)

## Airport transfer service

This bus service is free for students enrolled at Deakin, and takes you from the airport directly to Deakin College or your Deakin Residence.

[deakincollege.edu.au/airport-pickup](https://deakincollege.edu.au/airport-pickup)

## Learning and health support

As a student you have access to Deakin University's large support network:

- Free, confidential personal or welfare counselling service
- Language and learning advisors and additional study support services
- Study skills workshops: study and writing skills, assignment preparation and examination techniques
- Health Services Unit: general medical care, health promotion and stress management
- Chaplain: spiritual and pastoral care (Australian campuses only)

[deakincollege.edu.au/student-services](https://deakincollege.edu.au/student-services)

## Study skills support

Make an appointment with a Student Learning Advisor for assistance with specific study skills such as referencing, essay structure, time management and exam preparation.

[deakincollege.edu.au/student-learning-advisors](https://deakincollege.edu.au/student-learning-advisors)

## Student Committee

The Student Committee (SC) acts as the voice of our students, ensuring any student concerns reach Deakin College staff. Regular meetings ensure that students communicate with Deakin College regularly. The SC also organises social events to foster a sense of community at Deakin College.



## Clubs and societies

Through the Deakin University Student Association (DUSA), you can build friendships through a wide choice of clubs, sports and social events, as well as take trips and save on study costs. You can even start your own club! For more information, visit: [dusa.org.au](http://dusa.org.au).

## Campus facilities

Deakin College students on Australian campuses have access to all Deakin University facilities including sport and recreational activities, libraries, bookshops, 24-hour computer laboratories and campus shops. [deakin.edu.au/life-at-deakin/student-life](http://deakin.edu.au/life-at-deakin/student-life)



## Disability support

We are committed to providing equal opportunities to students with disabilities. Deakin offers support services for students with a disability, health or mental health conditions that affect their study. Speak to Deakin College about how we can support you and your studies.

Deakin College encourages students to provide all information regarding the nature of their disability during the application and enrolment process to ensure we can meet their needs.

## Feel at home at Deakin

Make Deakin your home and enjoy open and inviting spaces for socialising and studying, spacious new buildings and full WiFi coverage.

## Deakin College Student Portal

All students have access to the Deakin College Student Portal which provides important study information including unit outlines, course notes, examination timetables, results, forms and re-enrolment details.

## Multifaith Chaplaincy

The Deakin chaplaincy program provides spiritual and pastoral care for all students. Our multifaith program is supportive, diverse and accepting. We provide opportunities to join workshops, prayer groups and reflection sessions so you can extend your faith. For more information on Deakin's Multifaith Chaplaincy, visit [deakin.edu.au/students/health-and-wellbeing/multifaith-chaplain](http://deakin.edu.au/students/health-and-wellbeing/multifaith-chaplain)

## Find us on social media

Follow us on social media and see what's happening at Deakin College before you start studying.



[facebook.com/DeakinCollege](https://facebook.com/DeakinCollege)



[instagram.com/deakincollege\\_official](https://instagram.com/deakincollege_official)



[snapchat.com/deakincollege](https://snapchat.com/deakincollege)



[youtube.com/deakincollege](https://youtube.com/deakincollege)



[tiktok.com/@deakincollege](https://tiktok.com/@deakincollege)

# Accommodation

## Australian campuses

Be sure to arrange your accommodation as soon as you know which campus you will be studying at. Options will depend on your campus location, budget and your preferred type of accommodation.

### On-campus accommodation

Living on campus means you can immerse yourself in the Deakin College experience, meet other students, and easily adjust to life at university. Designed to facilitate your studies and personal life, each Deakin residence is comfortable, secure, and welcoming. You will have access to modern facilities, a 24/7 reception, and Deakin College on your doorstep.

On-campus accommodation is available at the Melbourne Burwood Campus, Geelong Warrn Ponds Campus and Geelong Waterfront Campus.

For more information on costs, application procedures and key dates, visit:

**[deakin.edu.au/accommodation](https://deakin.edu.au/accommodation)**

### Off campus housing service

If you prefer to live off campus, Deakin College can suggest accommodation options including full board, share housing and rental properties through Deakin University Student Life. For more information, visit:

**[studystays.deakin.edu.au](https://studystays.deakin.edu.au)**

### Homestay

Living with a family or resident is a great way to improve language skills and learn about local culture.

For more information, visit

**[student-accommodation.com.au](https://student-accommodation.com.au)**

### Cost of living

Your living expenses will depend on your individual lifestyle and accommodation. Deakin College estimates that a single international student requires AUD\$32,000-AUD\$35,000 per year to live in Melbourne and AUD\$30,000-AUD\$32,000 per year to live in Geelong.

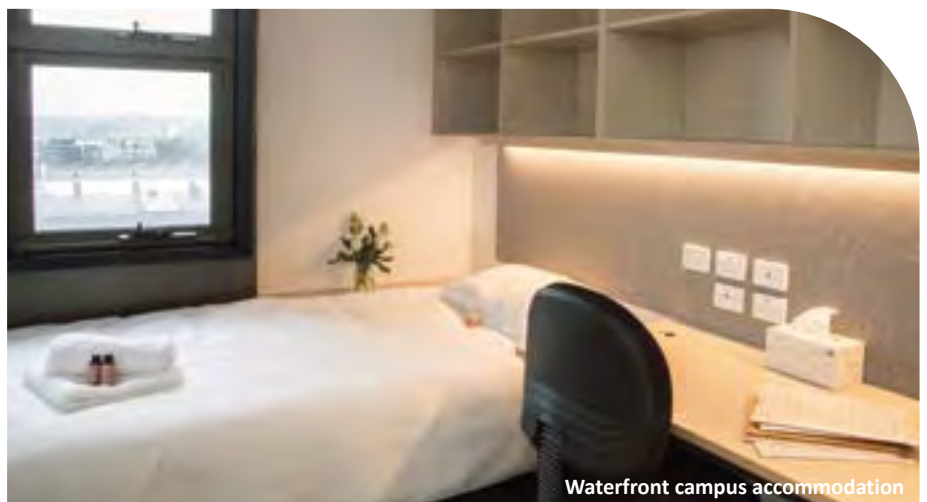
The Department of Home Affairs suggests that student visa holders should budget at least A\$29,710 each study year for living expenses.

For more information, visit:

**[costofliving.studyaustralia.gov.au](https://costofliving.studyaustralia.gov.au)**



Burwood campus accommodation



Waterfront campus accommodation



# Care of students under the age of 18

Students under 18 years of age are classified as minors and must meet immigration requirements for accommodation, support and general welfare arrangements before a student visa is granted.

## Under 18 Management Program

Deakin College's Under-18 Management Program makes sure you have all the support you need until you turn 18.

As part of the program, you will live in a supported accommodation environment and be assigned a Guardian, who is responsible for your care and wellbeing.

## Your accommodation options

As an international student under 18 years of age, you must either:

- reside in Australia with a parent, or a person who has custody of you, or a relative aged at least 21, nominated by either your parent or the person having custody of you, or;
- go into care arrangements – for your accommodation, support and general welfare – i.e. homestay approved by Deakin College.

## Guardianship

If you're living with your relative, they will be appointed your legal guardian. If you're living in a homestay, you will be appointed a guardian from Deakin College or an external guardianship service. We will provide you with a CAAW letter confirming these details, which you will need for your visa application.

Your Guardian will be your main point of contact until you turn 18. They will be in regular contact with both you and your parents. If you need any help or just want someone to talk to, your Guardian is the best person to go to.

For more information, visit  
[deakincollege.edu.au/how-apply/international/under-18-management](https://deakincollege.edu.au/how-apply/international/under-18-management)



# Deakin College Foundation Program

## Location

Melbourne Burwood Campus  
Geelong Waterfront Campus

## Duration

8 months (Standard track)  
12 months (Extended track)\*\*

## Academic entry requirement

Year 11 or equivalent

## 2026 Tuition Fees\*

Standard \$32,200  
Extended \$37,260

## Intakes

March, June and October

## English entry requirement

Standard track: IELTS score of 5.5  
(with no band score below 5.0)  
Extended track: IELTS score of 5.5  
(with no band score below 4.5)

## CRICOS course codes

089916J  
089917G

\*Course fees are indicative only  
and subject to change each year.

\*\*Only offered at the Melbourne  
Burwood campus.

The Deakin College Foundation Program is similar to upper secondary school (Year 12) and university foundation programs. It aims to prepare you for further study in a Deakin College diploma or for entry into the first year of a selected Deakin University bachelor degree.

## Who should apply?

The Foundation Program is aimed at students who have completed the equivalent of Australian high school Year 11 (see page 37 for country specific academic requirements).

## Course outline

The course comprises of a standard or extended track program. The standard track program consists of eight academic units: five core units aimed at preparing students for all pathways at Deakin University and three elective units, which students can choose based on their desired area of study. The Extended track program has an additional four units, which prepare students for the remaining units in the program.

Various support services focusing on language, literary and numeracy assistance are also available to help you in your studies. Each unit includes four hours of class contact per week. Assessment for all units is continuous and includes tests, assignments and case study analysis. To graduate from the Deakin College Foundation Program, you must complete and pass all eight units in the standard program or 12 units in the extended program.

## Foundation to Deakin University first year entry

After successfully completing the Foundation program and meeting specified entry requirements, you may be eligible to apply for entry into the first year of selected Deakin University bachelor degrees that do not follow directly from Deakin College's diploma courses. For an updated list of the first year degree courses you can get into at Deakin University, visit [deakincollege.edu.au/courses/foundation-program](https://deakincollege.edu.au/courses/foundation-program)



## Course structure

### Standard Program

Complete and pass eight units:

#### Unit selection for first trimester

- FNDS013 Advanced Academic Communication Skills (Core)
- FNDS015 Information Technology (Core)
- FNDH023 Essential Mathematics (Core)\*
- FNDS014 Intercultural Studies (Core)

#### Unit selection for second trimester

- FNDS016 Advanced Academic Writing and Research (Core)
- Elective^
- Elective
- Elective

#### Elective Units

- FNDA022 Media
- FNDA040 Digital Design
- FNDB020 Accounting
- FNDB021 Economics
- FNDB022 Management
- FNDE021 Mathematics I
- FNDE022 Physics
- FNDE023 Mathematics II
- FNDE024 Biology
- FNDE025 Programming Fundamentals
- FNDH021 Chemistry
- FNDB023 Marketing

### Extended Program

For students who do not meet the entry requirements of the standard track program, an extended track program is also available with an additional four units that need to be completed.

Complete and pass 12 units:

#### Unit selection for first trimester

- FNDS012 Computer Skills (Core)
- FNDH023 Essential Mathematics (Core)
- FNDS010 Introduction to Academic Communication (Core)
- FNDS011 Introduction to Academic Writing (Core)

#### Unit selection for second trimester

- FNDS013 Advanced Academic Communications (Core)
- FNDS015 Information Technology (Core)
- FNDS014 Intercultural Studies (Core)
- Elective\*

#### Unit selection for third trimester

- FNDS016 Advanced Academic Writing and Research (Core)
- Elective^
- Elective
- Elective

\*Engineering students will need to take FNDE021 Mathematics 1 in place of this unit.

^Engineering students will need to take FNDE023 Mathematics 2 in place of this unit.

Scan or click



For up-to-date course details, core units and additional information.





# Choose your course

Deakin College offers diplomas in Business, Commerce, Communication, Design, Engineering, Film, Television and Animation, Health Sciences, Information Technology and Science. These courses aim to prepare you for entry into second year of a relevant bachelor's degree.



# University-level Diplomas

## Who should apply?

The diploma courses are aimed at students who have completed the equivalent of Australian school Year 12 or a selected post-secondary certificate or diploma (see pages 37–38 for country specific academic requirements).

## Course structure

Each diploma consists of eight academic units, which you must complete and pass to receive the diploma. Most units have four hours of class per week. Assessment for all units is continuous and includes tests, assignments and case study analysis. Most units have a final two hour examination.

## Course accreditation

The diploma courses are accredited by the Tertiary Education Quality and Standards Agency (TEQSA).

## Diploma to degree transfer criteria

When you successfully complete a diploma, you will be eligible for entry into the second year of the relevant Deakin University undergraduate degree, provided you have met the following criteria:

- completed and passed eight Deakin College Diploma units\*
- achieve the required Weighted Average Mark (WAM).

Deakin College students who complete their course within the normal time frame for completion (based on full-time enrolment) are considered for entry to Deakin University based on the conditions that applied at the time they commenced their course.

\*Transfer to some degrees requires specific Deakin College units to be completed in order to receive the appropriate credits. For full details and conditions, please visit the Deakin College website and click on the relevant diploma: [deakincollege.edu.au](https://deakincollege.edu.au).

# Diploma of Business

## Locations

Melbourne Burwood Campus

## Duration

8 or 12 months

## Academic entry requirement

Year 12 or equivalent

## English entry requirement

IELTS 5.5 (with no band score below 5.0)

## 2026 Tuition Fees\*

\$40,000

## Intakes

March, June and October

## CRICOS course code

063386M

\*Course fees are indicative only and subject to change each year.

The Diploma of Business is your pathway to various bachelor degrees at Deakin University within the Faculty of Business and Law. The diploma allows you to select elective units within your bachelor degree in areas such as event management, public relations, project management and many others.

## Course structure

Complete and pass 8 core units (1 credit point each) plus 1-2 compulsory zero credit point modules

### Core units:

- MAA104 Financial Literacy
- MAE120 Money, Growth and the Economy
- MIS203 Managing Information in the Digital Age
- MMK101 Marketing Fundamentals
- MMM111 Managing Self and Others
- MMM132 Management
- MMM241 Entrepreneurship and Innovation
- MMM267 Business Logistics

### Zero credit point modules:

- DAI001 Academic Integrity and Respect at Deakin
- LDM100 Language Development Module<sup>^</sup>

## Employment options upon completing your Bachelor degree

Business analyst, business development manager, content manager, digital communications manager, entrepreneur, events manager, project manager, sustainability manager or responsible business planner.

<sup>^</sup> Students who have an IELTS of 6.0 or higher (or equivalent), or who have completed an Australian Foundation Program, do not need complete this module.





## Second year entry to Deakin University\*

	Trimester intake	WAM required for transfer			Maximum credits
		Burwood (Melbourne)	Waterfront (Geelong)	Waurin Ponds (Geelong)	
<b>Bachelor of Business</b> <span>B</span> <span>WF</span> ~ Business and Digital Communications <span>B</span> <span>WF</span> ~   Entrepreneurship and Innovation <span>B</span>   Event Management <span>B</span>   Organisational Psychology <span>B</span> <span>WF</span> ~   People Management <span>B</span> <span>WF</span>   Project Management <span>B</span>   Recruitment and Talent Acquisition <span>B</span> <span>WF</span>   Retail and Supply Chain Management <span>B</span>   Sustainability and Development <span>B</span>	T1 T2	50	50		8
<b>Bachelor of Commerce</b> * <span>B</span> <span>WF</span> Major sequences: Accounting <span>B</span> <span>WF</span>   Economics <span>B</span>   Finance <span>B</span> <span>WF</span>   Financial Planning <span>B</span> <span>WF</span>   Human Resource Management <span>B</span> <span>WF</span>   Management <span>B</span> <span>WF</span>   Management Information Systems <span>B</span>   Marketing <span>B</span> <span>WF</span>	T1 T2 T3**	50	50		8#
<b>Bachelor of Business Analytics</b> <span>B</span>	T1 T2	50			8#
<b>Bachelor of Laws</b> <span>B</span> <span>WF</span>	T1 T2**	70	70		8#
<b>Bachelor of Property and Real Estate</b> <span>B</span>	T1 T2	50			8#
<b>Bachelor of Business (Sports Management)</b> <span>B</span>	T1 T2	50			8#

T1 Trimester 1 entry T2 Trimester 2 entry T3 Trimester 3 entry

\* See page 20 for Diploma to Degree transfer criteria.

^^ Waterfront (Geelong) students will be required to undertake units in Online mode.

~ Waterfront (Geelong) students may be required to undertake units at the Waurin Ponds campus or Online mode.

≠ Choice of majors limited and not available on all campuses.

# These degrees require you to take additional first year degree units when you transfer to Deakin University.

\*\* Available at Burwood (Melbourne) only.

Burwood (Melbourne) B

Waterfront (Geelong) WF

Waurin Ponds (Geelong) WP

Scan or click



For up-to-date course details, core units and additional information.

# Diploma of Commerce

## Locations

Melbourne Burwood Campus  
Geelong Waterfront Campus

## Duration

8 or 12 months

## Academic entry requirement

Year 12 or equivalent

## English entry requirement

IELTS 5.5 (with no band score below 5.0)

## 2026 Tuition Fees\*

\$40,000

## Intakes

March, June and October

## CRICOS course code

022637C

\*Course fees are indicative only  
and subject to change each year.

The Diploma of Commerce provides the foundation for further study in areas such as accounting, business law, economics, finance, international business, marketing and management at Deakin University. Completing a degree in one of these fields offers a wide range of career options across private and public-sector organisations.

## Course structure

Complete and pass 8 core units (1 credit point each) plus 1-2 compulsory zero credit point modules

### Core units:

- MAA103 Accounting for Decision Making<sup>#</sup>
- MAE120 Money, Growth and the Economy
- MAF101 Fundamentals of Finance
- MIS171 Business Analytics
- MLC101 Law for Commerce
- MMK101 Marketing Fundamentals
- MMM132 Management
- MIS203 Managing Information in the Digital Age

### Zero credit point modules:

- DAI001 Academic Integrity and Respect at Deakin
- LDM100 Language Development Module<sup>^</sup>

## Employment options upon completing your Bachelor degree

Accounting, business consulting, business management, economics, finance, financial planning, human resource management, industrial relations, international trade, IT administration, IT system development, law reform, legal aid, marketing, network management, policy research and development, public administration.

<sup>#</sup> All students are required to sit a supervised on-campus exam for MAA103 Accounting for Decision Making during the exam week.

<sup>^</sup> Students who have an IELTS of 6.0 or higher (or equivalent), or who have completed an Australian Foundation Program, do not need complete this module.



## Second year entry to Deakin University\*

	Trimester intake	WAM required for transfer			Maximum credits
		Burwood (Melbourne)	Waterfront (Geelong)	Waurin Ponds (Geelong)	
<b>Bachelor of Commerce<sup>#</sup></b> <b>[B]</b> <b>[WF]</b> Major sequences: Accounting <b>[B]</b> <b>[WF]</b>   Economics <b>[B]</b>   Finance <b>[B]</b> <b>[WF]</b>   Financial Planning <b>[B]</b> <b>[WF]</b>   Human Resource Management <b>[B]</b> <b>[WF]</b>   Management <b>[B]</b> <b>[WF]</b>   Management Information Systems <b>[B]</b>   Marketing <b>[B]</b> <b>[WF]</b>	T1 T2 T3**	50	50		8
<b>Bachelor of Business</b> <b>[B]</b> <b>[WF]</b> ~ Business and Digital Communications <b>[B]</b> <b>[WF]</b> ~   Entrepreneurship and Innovation <b>[B]</b>   Event Management <b>[B]</b>   Organisational Psychology <b>[B]</b> <b>[WF]</b> ~   People Management <b>[B]</b> <b>[WF]</b>   Project Management <b>[B]</b>   Recruitment and Talent Acquisition <b>[B]</b> <b>[WF]</b>   Retail and Supply Chain Management <b>[B]</b>   Sustainability and Development <b>[B]</b>	T1 T2	50	50		8
<b>Bachelor of Business Analytics</b> <b>[B]</b>	T1 T2	50			8 <sup>#</sup>
<b>Bachelor of Laws</b> <b>[B]</b> <b>[WF]</b>	T1 T2**	70	70		8 <sup>#</sup>
<b>Bachelor of Property and Real Estate</b> <b>[B]</b>	T1 T2	50			8 <sup>#</sup>
<b>Bachelor of Business (Sports Management)</b> <b>[B]</b>	T1 T2	50			8 <sup>#</sup>

T1 Trimester 1 entry T2 Trimester 2 entry T3 Trimester 3 entry

\* See page 20 for Diploma to Degree transfer criteria.

≠ Choice of majors limited and not available on all campuses.

# These degrees require you to take additional first year degree units when you transfer to Deakin University. The degree may therefore take longer to complete.

^^ Waterfront (Geelong) students will be required to undertake units in Online mode.

~ Waterfront (Geelong) students may be required to undertake units at the Waurin Ponds (Geelong) campus.

\*\* Available at Burwood (Melbourne) only.

Burwood (Melbourne) **[B]**

Waterfront (Geelong) **[WF]**

Waurin Ponds (Geelong) **[WP]**

Scan or click



For up-to-date course details, core units and additional information.



# Diploma of Communication

## Locations

Melbourne Burwood Campus

## Duration

8 or 12 months

## Academic entry requirement

Year 12 or equivalent

## English entry requirement

IELTS 5.5 (with no band score below 5.0)

## 2026 Tuition Fees\*

\$35,200

## Intakes

March, June and October

## CRICOS course code

097893M

\*Course fees are indicative only and subject to change each year.

This diploma offers a wide range of unit choices leading to the second year of the relevant Deakin University degree. Areas of study include advertising, communications, criminology, journalism, digital media and public relations.

## Course structure

Complete and pass 8 units (1 credit point each)\* plus 1-2 compulsory zero credit point modules

### Units\*:

- ACC100 Gutenberg to Zuckerberg: Communication in Everyday Life
- AWL100 Your Future Direction
- ALA101 Advertising Principles and Practices
- ALA102 Creative Brand Communication
- ALR103 Introduction to Public Relations
- ALR104 Strategic Communication and Writing
- ALJ111 Introduction to Journalism
- ALJ112 News Reporting
- ALM101 Making Social Media
- ALM102 Making Video
- ADA102 Designing 3D Animated Environments
- ADD101 Design Thinking
- ADD106 Type Foundations
- ACF104 Screening History
- ADA107 Principles of Animation
- ADT103 UX Fundamentals
- ACI102 Digital Photography
- ADD105 Design Fundamentals
- ACR101 Introducing Crime and Criminology
- ACR102 Introducing Crime and Criminal Justice

### Zero credit point modules:

- DAI001 Academic Integrity and Respect at Deakin
- LDM100 Language Development Module^

## Employment options upon completing your Bachelor degree

Advertising agency roles, account management, media planning, journalist, copywriting and art direction, media policy and management, politics, research, media business-oriented consulting, 'in house' brand communications.

+ Choice of units is based on the major you wish to study at Deakin University. Full details are listed on the Deakin College website.

^ Students who have an IELTS of 6.0 or higher (or equivalent), or who have completed an Australian Foundation Program, do not need complete this module.



## Second year entry to Deakin University\*

	Trimester intake	WAM required for transfer			Maximum credits
		Burwood (Melbourne)	Waterfront (Geelong)	Waurm Ponds (Geelong)	
<b>Bachelor of Arts*</b> <span>B</span> <span>WP</span> Major sequences: Criminology <span>B</span> <span>WP</span>   Film and TV Studies <span>B</span>   Media and Communication <span>B</span> <span>WP</span>   Media Studies <span>B</span>   Public Relations Studies <span>B</span> <span>WP</span>   Social Media <span>B</span> <span>WP</span>   Strategic Advertising <span>B</span>   Visual Communication Design <span>B</span> <span>WP</span>	T1 T2 T3	50		50	8
<b>Bachelor of Arts (Psychology)</b> <span>B</span> <span>WP</span> Major sequences: Criminology <span>B</span> <span>WP</span>   Media and Communication <span>B</span> <span>WP</span>   Media Studies <span>B</span>   Public Relations Studies <span>B</span> <span>WP</span>   Social Media <span>B</span> <span>WP</span>   Strategic Advertising <span>B</span>   Visual Communication Design <span>B</span> <span>WP</span>	T1 T2 T3	50		50	8
<b>Bachelor of Communication</b> <span>B</span> <span>WP</span> Major sequences: Advertising <span>B</span> <span>WP</span>   Digital and Social Media <span>B</span> <span>WP</span>   Journalism <span>B</span> <span>WP</span>   Public Relations <span>B</span> <span>WP</span>	T1 T2 T3	50		50	8
<b>Bachelor of Criminology</b> <span>B</span> <span>WP</span>	T1 T2	50		50	8

T1 Trimester 1 entry T2 Trimester 2 entry T3 Trimester 3 entry

\* See page 20 for Diploma to Degree transfer criteria.

≠ Choice of majors limited and not available on all campuses.

Burwood (Melbourne) B

Waterfront (Geelong) WF

Waurm Ponds (Geelong) WP

Scan or click



For up-to-date course details, core units and additional information.

# Diploma of Design

## Locations

Melbourne Burwood Campus

## Duration

8 or 12 months

## Academic entry requirement

Year 12 or equivalent

## English entry requirement

IELTS 5.5 (with no band score below 5.0)

## 2026 Tuition Fees\*

\$35,200

## Intakes

March, June and October

## CRICOS course code

097895J

\*Course fees are indicative only and subject to change each year.

Learn the tools, strategies and design thinking methodologies required to be an adaptable, multidisciplinary designer. The Diploma of Design builds the foundation for further study in visual communication, animation and digital technologies.

## Course structure

Complete and pass 8 units (1 credit point each) plus 1-2 compulsory zero credit point modules

### 6 core units:

- AWL100 Your Future Direction
- ADD101 Design Thinking
- ADT102 Interaction Design
- ADT103 UX Fundamentals
- ADD105 Design Fundamentals
- ADD106 Type Foundations

### 2 elective units:

- ACI102 Digital Photography
- ACR101 Introducing Crime and Criminology
- ACR102 Introducing Crime and Criminal Justice
- ADD105 Design Fundamentals
- ALW103 Scriptwriting Fundamentals
- ADT102 Interaction Design
- ADT103 UX Fundamentals
- ACC100 Gutenberg to Zuckerberg: Communication in Everyday Life
- ACF103 Writing with the Camera
- ALA101 Advertising Principles and Practices
- ALA102 Creative Brand Communication
- ACF104 Screening History
- ALJ112 News Reporting
- ALM101 Making Social Media
- ALM102 Making Video
- ALR103 Introduction to Public Relations
- ALR104 Strategic Communication and Writing
- ADA102 Designing 3D Animated Environments

### Zero credit point modules:

- DAI001 Academic Integrity and Respect at Deakin
- LDM100 Language Development Module<sup>^</sup>

## Employment options upon completing your Bachelor degree

Work in advertising, graphic design studios, print houses, publishers, corporate companies who host in-house design services, government and private practices, motion design, animation, film and television, web design, motion capture performance, augmented and virtual reality, UX design, web design, digital design and immersive design.

<sup>^</sup> Students who have an IELTS of 6.0 or higher (or equivalent), or who have completed an Australian Foundation Program, do not need complete this module.





## Second year entry to Deakin University\*

	Trimester intake	WAM required for transfer			Maximum credits
		Burwood (Melbourne)	Waterfront (Geelong)	Waurm Ponds (Geelong)	
<b>Bachelor of Design</b> <span>B</span> <span>WP</span>	T1 T2	50		50	8
Major sequences: Communication Design <span>B</span> <span>WP</span>   Interactive and UX Design <span>B</span> <span>WP</span>					

T1 Trimester 1 entry    T2 Trimester 2 entry

\* See page 20 for Diploma to Degree transfer criteria.

Burwood (Melbourne) B

Waterfront (Geelong) WF

Waurm Ponds (Geelong) WP

Scan or click



For up-to-date course details, core units and additional information.

# Diploma of Engineering

## Locations

Melbourne Burwood  
Geelong Waurin Ponds Campus

## Duration

8 or 12 months

## Academic entry requirement

Year 12 or equivalent

## English entry requirement

IELTS 5.5 (with no band score below 5.0)

## Prerequisite

Year 12 Mathematics  
or equivalent

## 2026 Tuition Fees\*

\$38,400

## Intakes

March, June and October

## CRICOS course code

063385A

\*Course fees are indicative only  
and subject to change each year.

The Diploma of Engineering is a broad course that will give you the skills and knowledge required for a full spectrum of opportunities in the field of engineering. You can choose to specialise in civil, electrical and renewable energy, environmental and sustainability, mechanical or mechatronics engineering when you enter second year at Deakin University.

## Course structure

Complete and pass units worth 8 credit points plus 2-3 compulsory zero credit point modules\*

### Units:

- SEB101 Engineering Physics (1 credit point)
- SEJ104 Engineering in Society (1 credit point)
- SEP105 Introduction to Programming for Engineers (1 credit point)
- SET111 Sustainable Design (1 credit point)
- SIT194 Introduction to Mathematical Modelling (1 credit point)
- SIT190 Introduction to Functions, Relations and Graphs (1 credit point)
- SEJ102 Electrical Systems Engineering Project (2 credit points)
- SEJ103 Materials Engineering Project (2 credit points)

### Zero credit point modules:

- DAI001 Academic Integrity and Respect at Deakin
- SEJ010 Introduction to Safety and Project Oriented Learning
- LDM100 Language Development Module^

## Employment options upon completing your Bachelor degree

Pursue an engineering career in disciplines like Aerospace, aircraft control and navigation, automotive industry, construction, design and manufacturing, electronic control systems, factory control, government engineering, roads and railroads, shipbuilding, robotics, water supply, power engineering, natural resource management.

+ Choice of units is based on the major you wish to study at Deakin University. Full details are listed on the Deakin College website.

^ Students who have an IELTS of 6.0 or higher (or equivalent), or who have completed an Australian Foundation Program, do not need complete this module.



## Second year entry to Deakin University\*

	Trimester intake	WAM required for transfer			Maximum credits
		Burwood (Melbourne)	Waterfront (Geelong)	Waurin Ponds (Geelong)	
<b>Bachelor of Engineering (Honours)</b> <span>WP</span> <span>B</span>	T1 T2	50		50	8
Major sequences: Environmental and Sustainability <span>B</span> <span>WP</span>					
Mechatronics <span>B</span> <span>WP</span>   Mechanical <span>B</span> <span>WP</span>   Civil <span>B</span> <span>WP</span>					
Electrical and Renewable Energy <span>B</span> <span>WP</span>					

Note: The undergraduate Engineering courses are four year degrees. On completion of the Deakin College Diploma you will be required to study an additional 3 years of full-time study.

T1 Trimester 1 entry    T2 Trimester 2 entry

\* See page 20 for Diploma to Degree transfer criteria.

Burwood (Melbourne) B

Waterfront (Geelong) WF

Waurin Ponds (Geelong) WP

### Deakin CADET building

Deakin University's Centre for Advanced Design in Engineering Training (CADET) changes the way students learn and train to become engineers of the future. Direct collaboration with industry, an emphasis on shifting the learning model to a design based approach and using the latest equipment and facilities all come together for a 21st century engineering education.



Waurin Ponds Lab

Scan or click



For up-to-date course details, core units and additional information.



# Diploma of Film, Television and Animation

## Locations

Melbourne Burwood Campus

## Duration

8 or 12 months

## Academic entry requirement

Year 12 or equivalent

## English entry requirement

IELTS 5.5 (with no band score below 5.0)

## 2026 Tuition Fees\*

\$35,920

## Intakes

March, June and October

## CRICOS course code

097894K

\*Course fees are indicative only and subject to change each year.

The Diploma of Film, Television and Animation is a unique course that provides a direct pathway into the Deakin University Bachelor of Film, Television and Animation. Gain a hands-on education using state of the art technology within an inspiring creative arts environment.

## Course structure

Complete and pass 8 units (1 credit point each) plus 1-2 compulsory zero credit point modules

### 6 core units:

- ACF103 Writing with the Camera
- ADA102 Designing 3D Animated Environments
- ALW103 Scriptwriting Fundamentals
- AWL100 Your Future Direction
- ADA107 Principles of Animation
- ACF104 Screening History

### 2 elective units:

- ACC100 Gutenberg to Zuckerberg: Communication in Everyday Life
- ACI102 Digital Photography
- ADD101 Design Thinking
- ALA101 Advertising Principles and Practices
- ALA102 Creative Brand Communication
- ALJ111 Introduction to Journalism
- ALJ112 News Reporting
- ALM101 Making Social Media
- ALM102 Making Video
- ACR101 Introducing Crime and Criminology
- ACR102 Introducing Crime and Criminal Justice
- ADD106 Type Foundations
- ADD105 Design Fundamentals
- ADT102 Interaction Design
- ADT103 UX Fundamentals
- ALR103 Introduction to Public Relations
- ALR104 Strategic Communication and Writing

### Zero credit point modules:

- DAI001 Academic Integrity and Respect at Deakin
- LDM100 Language Development Module<sup>^</sup>




## Employment options upon completing your Bachelor degree

Pursue a creative career such as an animator film director, producer, script writer, film editor, post-production or film crew member.

<sup>^</sup> Students who have an IELTS of 6.0 or higher (or equivalent), or who have completed an Australian Foundation Program, do not need complete this module.



## Second year entry to Deakin University\*


	Trimester intake	WAM required for transfer			Maximum credits
		Burwood (Melbourne)	Waterfront (Geelong)	Waurin Ponds (Geelong)	
<b>Bachelor of Film, Television and Animation</b> 	T1 T2 T3	50			8
Major sequences: Producing Screen Content    Animation 					

T1 Trimester 1 entry   T2 Trimester 2 entry   T3 Trimester 3 entry

\* See page 20 for Diploma to Degree transfer criteria.

Burwood (Melbourne) 

Waterfront (Geelong) 

Waurin Ponds (Geelong) 

Scan or click



For up-to-date course details, core units and additional information.

# Diploma of Health Sciences

## Locations

Melbourne Burwood Campus  
Geelong Waurin Ponds Campus

## Duration

8 or 12 months

## Academic entry requirement

Year 12 or equivalent

## English entry requirement

IELTS 5.5 (with no band score below 5.0)

## 2026 Tuition Fees\*

\$35,200

## Intakes

March, June and October

## CRICOS course code

059996G

\*Course fees are indicative only and subject to change each year.

This course provides a sound knowledge and understanding of the health of individuals, communities and populations. It will allow you to enter a wide variety of undergraduate courses at Deakin University in areas such as health sciences, psychology, exercise and sport science, food and nutrition and public health and health promotion.

## Course structure

Complete and pass 8 units (1 credit point each) plus 1-3 compulsory zero credit point modules\*

### Units:

- HBS107 Understanding Health
- HBS108 Health Information and Data
- HBS109 Introduction to Anatomy and Physiology
- HBS110 Health Psychology (Behaviour Change)
- HPS111 Introduction to Psychology: Human Behaviour
- HPS121 Introduction to Psychology: Individual and Social Development
- HSE102 Functional Human Anatomy
- HSE104 Research Methods and Data Analysis in Exercise and Sport
- HSE111 Physical Activity and Exercise for Health
- HSE113 Human Growth, Development and Aging for Exercise Scientists
- HSH102 Disease Prevention and Control
- HSH112 Local and Global Environments for Health
- HSN101 Foundations of Food, Nutrition and Health
- HSN105 Healthy and Sustainable Food Systems
- HSN107 Physiology of Human Growth and Development
- SLE111 Cells and Genes
- SLE115 Essential Skills in Bioscience
- SLE123 Physics for the Life Sciences
- SLE132 Biology Form and Function
- SLE133 Chemistry in Our World
- SLE155 Chemistry for the Professional Sciences
- MMM132 Management
- ACR101 Introducing Crime and Criminology
- ACR102 Introducing Crime and Criminal Justice

### Zero credit point modules:

- DAI001 Academic Integrity and Respect at Deakin
- SLE010 Laboratory and Fieldwork Safety Induction Program
- LDM100 Language Development Module^

## Employment options upon completing your Bachelor degree

Explore roles such as: case manager, case worker, community health officer, counsellor, development manager, disability officer, exercise scientist, fitness advisor, food product developer, food quality assurance manager, health educator, health promotion officer, market researcher, nutritionist, project officer, sports coach, vocational guidance worker.

+ Choice of units is based on the Deakin University degree you wish to enter. Full details are listed on the Deakin College website.

^ Students who have an IELTS of 6.0 or higher (or equivalent), or who have completed an Australian Foundation Program, do not need complete this module.





Scan or click



For up-to-date course details, core units and additional information.

## Second year entry to Deakin University\*

	Trimester intake	WAM required for transfer			Maximum credits
		Burwood (Melbourne)	Waterfront (Geelong)	Waurin Ponds (Geelong)	
<b>Bachelor of Exercise and Sports Science*</b> <span>B</span> <span>WP</span> Major sequences: Applied Sport Science <span>B</span> <span>WP</span>   Disability and Inclusion <span>B</span>   Exercise Physiology <span>B</span> <span>WP</span>   Family, Society and Health <span>B</span>   Health Promotion <span>B</span> <span>WP</span>   Nutrition <span>B</span> <span>WP</span>   Physical Activity and Health <span>B</span> <span>WP</span>   Psychology <span>B</span> <span>WP</span>   Sports Coaching <span>B</span> <span>WP</span>   Sports Nutrition <span>B</span> <span>WP</span>   Strength and Conditioning <span>B</span> <span>WP</span>	T1 T2	50		50	8 <sup>#</sup>
<b>Bachelor of Health Sciences *</b> <span>B</span> <span>WP</span> Major sequences: Disability and Inclusion <span>B</span>   Environmental Health <span>B</span> <span>WP</span>   Exercise Science <span>B</span> <span>WP</span>   Family, Society and Health <span>B</span>   Food Studies <span>B</span>   Health, Nature and Sustainability <span>B</span>   Health Promotion <span>B</span> <span>WP</span>   Medical Biotechnology <span>B</span> <span>WP</span>   Nutrition <span>B</span> <span>WP</span>   Physical Activity and Health <span>B</span> <span>WP</span>   Psychology for Allied Health <span>B</span> <span>WP</span>   Psychological Science <span>B</span> <span>WP</span>   Public Health <span>B</span> <span>WP</span> <span>C</span>	T1 T2	50		50	8 <sup>#</sup>
<b>Bachelor of Nutrition Science</b> <span>B</span> Major sequences: Disability and Inclusion <span>B</span>   Family, Society and Health <span>B</span>   Food Innovation <span>B</span>   Exercise Science <span>B</span>   Health Promotion <span>B</span>   Physical Activity and Health <span>B</span>   Psychology <span>B</span>	T1 T2	50			8 <sup>#</sup>
<b>Bachelor of Psychological Science*</b> <span>B</span> <span>WP</span> Forensic Studies <span>B</span> <span>WP</span>   Child and Family <span>B</span> <span>WP</span>   Organisational Studies <span>B</span>	T1 T2	50		50	8
<b>Bachelor of Public Health and Health Promotion</b> <span>B</span> <span>WP</span>	T1 T2	50		50	8 <sup>#</sup>
<b>Bachelor of Biomedical Science</b> <span>B</span> <span>WP</span> Major sequences: Environmental Health <span>B</span> <span>WP</span>   Infection and Immunity <span>B</span> <span>WP</span>   Medical Biotechnology <span>B</span> <span>WP</span>   Medical Genomics <span>B</span> <span>WP</span>   Molecular Life Sciences <span>B</span> <span>WP</span>   Pharmaceutical Science <span>B</span> <span>WP</span>	T1 T2	50		50	8 <sup>#</sup>

T1 Trimester 1 entry    T2 Trimester 2 entry

\* See page 20 for Diploma to Degree transfer criteria.

+ Full details are listed on the Deakin College website.

≠ Choice of majors limited and not available on all campuses.

# These degrees require you to take additional first year degree units when you transfer to Deakin University.

The degree may therefore take longer to complete.

§ Individual units may not be available on every campus.

++ Offered at Burwood (Melbourne) only.

+++ Offered at Burwood (Melbourne) and online only.

Burwood (Melbourne) B

Waterfront (Geelong) WF

Waurin Ponds (Geelong) WP

# Diploma of Information Technology

## Locations

Melbourne Burwood Campus

## Duration

8 or 12 months

## Academic entry requirement

Year 12 or equivalent

## English entry requirement

IELTS 5.5 (with no band score below 5.0)

## 2026 Tuition Fees\*

\$37,600

## Intakes

March, June and October

## CRICOS course code

097891B

\*Course fees are indicative only and subject to change each year.

The Diploma of Information Technology provides a broad introduction to computing. Afterward, you can progress into more specialised areas including computer science, cyber security, data science, software engineering and artificial intelligence. Further specialisation can be pursued through major and minor sequences, where offered.

## Course structure

Complete and pass 8 units (1 credit point each)\* plus 1-2 compulsory zero credit point modules

- SIT102 Introduction to Programming
- SIT103 Database Fundamentals
- SIT111 Computer Systems
- SIT112 Introduction to Data Science and Artificial Intelligence
- SIT120 Introduction to Responsive Web Apps
- SIT182 Real World Practices for Cyber Security
- SIT190 Introduction to Functions, Relations and Graphs
- SIT192 Discrete Mathematics
- SIT194 Introduction to Mathematical Modelling
- SIT199 Applied Algebra and Statistics
- MMM132 Management
- SEJ104 Engineering in Society
- SET111 Sustainable Design

### Zero credit point modules:

- DAI001 Academic Integrity and Respect at Deakin
- LDM100 Language Development Module<sup>^</sup>

## Employment options upon completing your Bachelor degree

Discover opportunities in application development, web development, networking and cloud computing, artificial intelligence, cyber security, data analytics, data communications, virtual and augmented reality and game development.

+ Choice of units is based on the Deakin University degree you wish to enter. Full details are listed on the Deakin College website.

<sup>^</sup> Students who have an IELTS of 6.0 or higher (or equivalent), or who have completed an Australian Foundation Program, do not need complete this module.



## Second year entry to Deakin University\*

	Trimester intake	WAM required for transfer			Maximum credits
		Burwood (Melbourne)	Waterfront (Geelong)	Waurin Ponds (Geelong)	
<b>Bachelor of Information Technology<sup>‡</sup></b> <span>B</span> <span>WP</span> Major sequences: Application Development <span>B</span>   Cloud Native Application Development <span>B</span>   Networking and Cloud Computing <span>B</span> <span>WP</span>   Cyber Security <span>B</span> <span>WP</span>	T1 T2	50		50	8
<b>Bachelor of Computer Science</b> <span>B</span> Major sequences: Data Science <span>B</span>   Computational Mathematics <span>B</span>   Internet-of-Things <span>B</span>   Robotics <span>B</span>	T1 T2	50			8
<b>Bachelor of Cyber Security</b> <span>B</span> <span>WP</span>	T1 T2	50		50	8
<b>Bachelor of Data Science</b> <span>B</span>	T1 T2	50			8
<b>Bachelor of Software Engineering (Honours)</b> <span>B</span>	T1 T2	50			8
<b>Bachelor of Artificial Intelligence<sup>#</sup></b> <span>B</span>	T1 T2	50			8

T1 Trimester 1 entry    T2 Trimester 2 entry

\* See page 20 for Diploma to Degree transfer criteria.

+ Choice of additional units is based on the Deakin University degree you wish to enter. Full details are listed on the Deakin College website.

‡ Choice of majors limited and not available on all campuses.

# These degrees may take longer to complete due to unit availability at Deakin University.

Burwood (Melbourne) B

Waterfront (Geelong) WF

Waurin Ponds (Geelong) WP

Scan or click



For up-to-date course details, core units and additional information.



# Diploma of Science

## Locations

Geelong Waurin Ponds Campus

## Duration

8 or 12 months

## Academic entry requirement

Year 12 or equivalent

## English entry requirement

IELTS 5.5 (with no band score below 5.0)

## 2026 Tuition Fees\*

\$37,600

## Intakes

March, June and October

## CRICOS course code

063387K

\*Course fees are indicative only and subject to change each year.

The Diploma of Science leads to Deakin University's Bachelor degrees in science, biomedical science, environmental science, forensic science or zoology and animal science. Graduates may work in a wide range of cutting-edge and rapidly growing fields and could be involved in the scientific developments that hold the key to the future.

## Course structure

Complete and pass 8 units\* (1 credit point each) plus 2-3 compulsory zero credit point modules

### Units:

- HBS107 Understanding Health
- HBS109 Human Structure and Function
- HSN101 Foundations of Food Nutrition and Health
- SIT190 Introductory Mathematical Methods
- SIT191 Introduction to Statistics and Data Analysis
- SIT194 Introduction to Mathematical Modelling
- SLE102 Physical Geography
- SLE103 Ecology and the Environment
- SLE109 Fundamentals of Environmental Science
- SLE111 Cells and Genes
- SLE112 Fundamentals of Forensic Science
- SLE115 Essential Skills in Bioscience
- SLE121 Environmental Sustainability
- SLE123 Physics for the Life Sciences
- SLE132 Biology: Form and Function
- SLE133 Chemistry in Our World
- SLE155 Chemistry for the Professional Sciences

### Zero credit point modules:

- DAI001 Academic Integrity and Respect at Deakin
- SLE010 Laboratory and Fieldwork Safety Induction Program
- LDM100 Language Development Module^

## Employment options upon completing your Bachelor degree

Work in biomedical science, environment and natural resources, forensics, genetic engineering, insurance investigation, laboratory technology, management, marketing, medical research, pest management officers, occupational health and safety, pharmaceutical production or sales, research science, risk analysis, quality assurance, education, quarantine officers.

+ Choice of units is based on the Deakin University degree you wish to enter. Full details are listed on the Deakin College website.

^ Students who have an IELTS of 6.0 or higher (or equivalent), or who have completed an Australian Foundation Program, do not need complete this module.



## Second year entry to Deakin University\*

	Trimester intake	WAM required for transfer			Maximum credits
		Burwood (Melbourne)	Waterfront (Geelong)	Waurin Ponds (Geelong)	
<b>Bachelor of Science*</b> <span>B</span> <span>WP</span> Major sequences: Animal Biology <span>B</span> <span>WP</span>   Cell Biology and Genomics <span>B</span> <span>WP</span>   Chemistry <span>WP</span> <span>B</span>   Environmental Science <span>B</span>   Food Science <span>B</span>   Human Biology <span>B</span> <span>WP</span>   Mathematical Modelling <span>B</span> <span>WP</span>   Plant Biology <span>B</span>	T1 T2	50		50	8 <sup>#</sup>
<b>Bachelor of Biomedical Science</b> <span>B</span> <span>WP</span> Major sequences: Environmental Health <span>B</span> <span>WP</span>   Infection and Immunity <span>B</span> <span>WP</span>   Medical Biotechnology <span>B</span> <span>WP</span>   Medical Genomics <span>B</span> <span>WP</span>   Cellular Biomedicine <span>B</span> <span>WP</span>   Pharmaceutical Science <span>B</span> <span>WP</span>	T1 T2	50		50	8 <sup>#</sup>
<b>Bachelor of Environmental Science and Sustainability</b> <span>B</span>	T1 T2	50			8 <sup>#</sup>
<b>Bachelor of Environmental Science (Wildlife and Conservation Biology)</b> <span>B</span>	T1 T2	50			8 <sup>#</sup>
<b>Bachelor of Forensic Science</b> <span>WP</span> Major sequences: Forensic Biology <span>WP</span>   Forensic Chemistry <span>WP</span>	T1 T2			50	8 <sup>#</sup>
<b>Bachelor of Zoology and Animal Science</b> <span>WP</span>	T1 T2			50	8 <sup>#</sup>

T1 Trimester 1 entry    T2 Trimester 2 entry

\* See page 20 for Diploma to Degree transfer criteria.

≠ Choice of majors limited and not available on all campuses.

# These degrees require you to take additional first year degree units when you transfer to Deakin University.

Burwood (Melbourne) B

Waterfront (Geelong) WF

Waurin Ponds (Geelong) WP

Scan or click



For up-to-date course details, core units and additional information.

# Academic entry requirements

## Foundation

To enter the Foundation, you generally need to have completed the equivalent of Australian high school Year 11.

## Diploma

To enter a diploma course, you generally need to have completed the equivalent of Australian high school Year 12. Entry to the Diploma of Engineering also requires the completion of Australian Year 12 Mathematics (or equivalent) as a prerequisite.

## Entry requirement queries

Specific academic entry requirements are listed below. Students with qualifications that are not listed should send their application and academic results to Deakin College for assessment.

For more information visit: [deakincollege.edu.au/how-apply/international/academic-entry-requirements](https://deakincollege.edu.au/how-apply/international/academic-entry-requirements)



Country	Foundation	Diploma
<b>All international</b>	International Baccalaureate (IB) Diploma with a minimum score of 15 in 6 subjects; or completion of IB Diploma First Year with a minimum Grade of 2 in each IB subject; or successful completion of IB Middle Years Programme (MYP) with a total minimum score of 40; or GCE O Levels with a pass in 3 academic subjects; or successful completion of GCE AS Levels	International Baccalaureate (IB) Diploma with a minimum score of 20 in 6 subjects; or IB Career-related Programme (CP) with a minimum grade of 3 for each of the two IB DP courses; or GCE A Levels with a pass in 2 subjects; or GCE AS Level with a minimum score of 9 in 3 subjects; or GCE AS Level with a pass in a minimum of 4 subjects.
<b>Australia</b>	Successful completion of Year 11 or equivalent	VCE or equivalent; or VCE VM
<b>Bangladesh</b>	Year 11 (10 + 1) with a 70% GPA	Completion of Higher Secondary Certificate with GPA of 3.0
<b>Brunei</b>	Successful completion of Form 5; or GCE O Levels with a pass in 3 academic subjects; or successful completion of GCE AS Levels	GCE A Levels with a pass in 2 subjects; or GCE AS Level with a minimum score of 9 in 3 subjects; or GCE AS Level with a pass in a minimum of 4 subjects.
<b>Cambodia</b>	Successful completion of year 11 with a C grade average	Diploma of Upper Secondary Education with a C grade average
<b>China</b>	Successful completion of Senior Middle 2 (Gao Er) with 55% or Vocational Technical Program with 60%	Successful completion of Senior Middle 3 (Gao San) with 60% or Vocational Academic Program with 60%
<b>Fiji</b>	Successful completion of Form 6 School Leaving Certificate with an overall score of 260	Successful completion of Form 7 with a B in English and Maths and a pass in all other subjects, with an overall score of 240
<b>France</b>	Completion of the French Baccalaureate	French Baccalaureate with an average of 10
<b>Ghana</b>	GCE O Levels with a pass in 3 academic subjects	GCE A Levels with a pass in 2 subjects; or GCE AS Level with a minimum score of 9 in 3 subjects; or GCE AS Level with a pass in a minimum of 4 subjects.
<b>Hong Kong</b>	Completion of Form 5	HKDSE with 8 points over the best 4 subjects from Category A and C (Excluding Physical Education)
<b>India</b>	GCE O Levels with a pass in 3 academic subjects; or successful completion of GCE AS Levels (Foundation program is only offered on a case-by-case basis)	Completion of Year 12 with a minimum 60%
<b>Indonesia</b>	SMA II with an average of 7.0 in 4 academic subjects	SMA III with an average of 6.5 in 4 academic subjects
<b>Japan</b>	Successful completion of Kotogakko Year 2 with a GPA 2.5	Successful completion of Kotogakko Year 3 a B grade average or a GPA of 2.5
<b>Kenya</b>	Completion of KCSE with a C- grade average; or GCE O Levels with a pass in 3 academic subjects; or successful completion of GCE AS Levels	Completion of KCSE with a C grade average; or GCE A Levels with a pass in 2 subjects; or GCE AS Level with a minimum score of 9 in 3 subjects; or GCE AS Level with a pass in a minimum of 4 subjects.
<b>Korea</b>	Senior High School Leaving Certificate Year 2 with average rank 7 in 4 academic subjects	Senior High School Certificate Year 3 with average Rank 6 in 4 academic subjects
<b>Kuwait</b>	Completion of Shahadat Al-Thanawaya Al-Aama (General Secondary Education Certificate) with minimum overall grade of 60%	Completion of Shahadat Al-Thanawaya Al-Aama (General Secondary Education Certificate) with a 70% average in final results
<b>Laos</b>	Completion of Year 11 with an overall minimum score of 60%	Completion of Upper Secondary School Diploma (Year 12) with an overall minimum score of 60%
<b>Lebanon</b>	Completion of Year 11 (Baccalauréat Libanais) with a minimum score of 10	Completion of General Secondary Certificate (Baccalauréat Libanais) with a minimum score of 12
<b>Macau</b>	Completion of Senior Middle 2 with an average of 60% in 4 subjects	Successful completion of Senior Middle 3 with an average of 60% in 4 academic subjects



Country	Foundation	Diploma
<b>Malawi</b>	GCE O Levels with a pass in 3 academic subjects; or successful completion of GCE AS Levels	GCE A Levels with a pass in 2 subjects; or GCE AS Level with a minimum score of 9 in 3 subjects; or GCE AS Level with a pass in a minimum of 4 subjects.
<b>Malaysia</b>	SPM with a pass in 4 academic subjects; or Senior Middle 2 with a pass in 4 academic subjects	2 passes (minimum C grade) in STPM; or Malaysia Independent Chinese Secondary Schools Unified Examination Certificate with a pass in 4 academic subjects
<b>Myanmar</b>	Completion of Basic Education High School Exam with overall pass	Completion of Basic Education High School Exam with grade of 50% in final year
<b>Nepal</b>	Completion of Higher Secondary School Leaving Certificate (Year 11) with a GPA of 2.0	Completion of Higher Secondary School Leaving Certificate (Year 12) with a GPA of 2.6
<b>Oman</b>	General Secondary Education Certificate/Thanawiya Amma	Additional year of study following General Secondary Education Certificate or Year 12 American program
<b>Pakistan</b>	GCE O Levels with a pass in 3 academic subjects; or successful completion of GCE AS Levels (Foundation program is only offered on a case-by-case basis)	Completion of Higher Secondary School Certificate with a grade average of 60%; or GCE A Levels with a pass in 2 subjects; or GCE AS Level with a minimum score of 9 in 3 subjects; or GCE AS Level with a pass in a minimum of 4 subjects.
<b>Papua New Guinea</b>	Higher School Certificate with a grade average of 60%	Higher School Certificate with a grade average of 70%
<b>Philippines</b>	Successful completion of Year 11 with an 80% average in relevant subjects	Successful completion of Year 12 with an 80% average
<b>Saudi Arabia</b>	General Secondary Education Certificate/Thanawiya Amma	Additional year of study following General Secondary Education Certificate or Year 12 American program
<b>Singapore</b>	Successful completion of Form 5; or Sec 4 (Express); or GCE O Levels with a pass in 3 academic subjects; or successful completion of GCE AS Levels; or GCE N levels with aggregate points of no more than 14 (based on best 3 academic subjects) and no more than 3 in English Syllabus A; or Successful completion of National ITE Certificate (Nitec) with a GPA of between 1 and 2; or Higher National ITE Certificate (Higher Nitec) with a GPA of less than 1	GCE A Levels with a pass in 2 subjects; or GCE AS Level with a minimum score of 9 in 3 subjects; or GCE AS Level with a pass in a minimum of 4 subjects.
<b>South Africa</b>	Successful completion of Year 11	Successful completion of Year 12
<b>Sri Lanka</b>	GCE O Levels with a pass in 3 academic subjects; or successful completion of GCE AS Levels	2 passes in Sri Lanka A-levels (General English is not counted); or GCE A Levels with a pass in 2 subjects; or GCE AS Level with a minimum score of 9 in 3 subjects; or GCE AS Level with a pass in a minimum of 4 subjects.
<b>Sweden</b>	Contact the Deakin College Admissions team	Avgangsbetyg / Slutbetyg (Upper Secondary School Leaving Certificate) with a score of 10 points
<b>Taiwan</b>	Completion of Senior High School Year 2 (Year 11) with a minimum 60% in 4 academic subjects	Completion of Senior High School Diploma Year 3 (Year 12) with a minimum 60% in 4 academic subjects; or completion of Senior Vocational School Diploma with a minimum 60% in 4 academic subjects; or the General Scholastic Ability Test (GSAT) with a minimum overall score of 30 in the best 4 subjects
<b>Tanzania</b>	GCE O Levels with a pass in 3 academic subjects	GCE A Levels with a pass in 2 subjects; or GCE AS Level with a minimum score of 9 in 3 subjects; or GCE AS Level with a pass in a minimum of 4 subjects.
<b>Thailand</b>	Successful completion of Matayom 5 with a GPA of 2.5	Successful completion of Matayom 6 with a GPA of 2.0
<b>Turkey</b>	Contact the Deakin College Admissions team	Successful completion of Lise Diploması with a GPA of 3.0
<b>Uganda</b>	GCE O Levels with a pass in 3 academic subjects	GCE A Levels with a pass in 2 subjects; or GCE AS Level with a minimum score of 9 in 3 subjects; or GCE AS Level with a pass in a minimum of 4 subjects.
<b>United States</b>	Successful completion of Grade 11 or equivalent	Successful completion of American High School Diploma with a minimum score of 2.0; or successful completion of Year 12 or equivalent PLUS a SAT score of 1000; or successful completion of GED (High School Equivalency) with a minimum overall score of 580, and no content area module below 145.
<b>United Kingdom</b>	GCE O Levels with a pass in 3 academic subjects; or successful completion of American High School Diploma with a minimum score of 2.0; or successful completion of Year 12 or equivalent PLUS a SAT score of 1000; or successful completion on GCE AS Levels	GCE A Levels with a pass in 2 subjects; or GCE AS Level with a minimum score of 9 in 3 subjects; or GCE AS Level with a pass in a minimum of 4 subjects.
<b>Vietnam</b>	Successful completion of Year 11 with a 6.0 GPA	Successful completion of Year 12 with a 6.0 GPA
<b>Zambia</b>	GCE O Levels with a pass in 3 academic subjects; or successful completion of GCE AS Levels	GCE A Levels with a pass in 2 subjects; or GCE AS Level with a minimum score of 9 in 3 subjects; or GCE AS Level with a pass in a minimum of 4 subjects.
<b>Zimbabwe</b>	GCE O Levels with a pass in 3 academic subjects; or successful completion of GCE AS Levels	GCE A Levels with a pass in 2 subjects; or GCE AS Level with a minimum score of 9 in 3 subjects; or GCE AS Level with a pass in a minimum of 4 subjects.

# English language

If you do not meet the English language requirements for your chosen course, you may be eligible to enter an intensive English language course at Deakin University English Language Institute (DUELI) to improve your English skills.

## English language courses

Deakin College can arrange full-time English tuition at the Deakin University English Language Institute (DUELI) if you need to improve your English skills before beginning your Deakin College course. DUELI offers a wide range of English language courses, from beginner to advanced levels. Depending on your English language needs, your course will run for 5 to 20 weeks. DUELI is only available for students studying in Australia and is located at Deakin University's Melbourne Burwood Campus. For more information about DUELI, including dates and course fees, visit: [deakin.edu.au/international-students/dueli](http://deakin.edu.au/international-students/dueli)



## English language requirements

The language of instruction at Deakin College is English. International applicants and Australian citizens with international qualifications must demonstrate a suitable level of English language proficiency before being admitted into a program. The below table provides a list of acceptable English language proficiency tests and required scores for entry to Deakin College courses. For more information visit:

[deakincollege.edu.au/how-apply/international/english-requirements](http://deakincollege.edu.au/how-apply/international/english-requirements)

English test/level	Foundation Program (Standard) <sup>#</sup> and Diploma courses	Foundation Program (Extended) <sup>#</sup>
<b>IELTS (Academic) including IELTS One Skill Retake</b>	5.5 (with no band score below 5.0)**	5.5 (with no band score below 4.5)**
<b>Pearson Test of English (PTE): Academic</b>	42 (with no communicative skill less than 36)**	42 (with no communicative skill less than 30)**
<b>TOEFL iBT</b>	51 - Listening and Reading 8; Writing 9; Speaking 14**	51 - Listening 3; Speaking 11; Reading and Writing 4**
<b>Cambridge English C1 Advanced</b>	162 (with no individual skill less than 154)	162 (with no individual skill less than 150)
<b>Deakin University English Language Institute (DUELI)</b>	EAP 2	EAP 2
<b>VCE English (any) (Australia)</b>	Units 3 and 4: a study score of at least 20 in any English	Contact us
<b>GCE O Level / AS Level English</b>	C	C
<b>GCE A Level English Language</b>	E***	E
<b>International Baccalaureate (IB) Diploma</b>	3 in higher level English or 4 in standard level English	3 in higher level English or 4 in standard level English

\*\*Students with Indian or Nepali citizenship require an IELTS 6.0 (with no band score below 5.5) or equivalent.

\*\*\* Students must undertake English Language Module (LDM100) if GCE A-Level English score is below grade 'C'.

#Excluding Foundation Program when packaged with a Bachelor of Nursing. Full details are listed on the Deakin College website.

## English language module

All our diploma programs include an English language module: LDM100 Language Development Module. This 0-credit-point module is free of charge and is compulsory for international students who have not received an exemption.

**Exemptions apply to students who have one of the following:**

- completed a Deakin College or other Australian Foundation Program
- IELTS of 6.0 or above (or equivalent)
- are citizens of the UK, USA, Canada, New Zealand or Ireland
- completed an Australian Year 12 or AQF Level 4 studies in the last 2 years
- completed a minimum of 5 years of study in English in Australia, New Zealand, UK, USA, Canada, Ireland or South Africa
- an IB English score of 4 or above
- a GCE O/A Level English score of 'C'

# Key terms

## Other charges (if applicable)

Overseas Student Health Cover (OSHC) fee: this is calculated based on duration of your student visa and is indicated on your Deakin College letter of offer.

## Pathway

A Foundation Program or Diploma offered by Deakin College that prepares students for entry into Deakin University courses.

## Trimester

At Deakin College there are three trimesters; Trimester 1 runs from March to June; Trimester 2 runs from June to October; Trimester 3 runs from October to February.

## Transfer to Deakin

There are specific academic guidelines that students must meet in order to transfer to Deakin University.

For more information visit: [deakincollege.edu.au/how-apply/international/transfer](https://deakincollege.edu.au/how-apply/international/transfer)

## Tuition fees

### Course fees include:

- study support workshops
- an orientation and enrolment program
- access to library, computing, sporting and social activities
- student counselling and academic assistance as required.

### Course fees do not include:

- accommodation
- meals and transport
- entertainment
- textbooks, stationery and printing
- airfares

### Other charges (if applicable)

Deakin University Student Association (DUSA) fee (see page 14): AUD\$30

## Weighted Average Mark (WAM)

This is a calculation of all your relevant unit outcomes within a course. The WAM is weighted by taking into consideration the credit points of a unit and the result.

To calculate the WAM for your diploma course, you will need the achievable credit points for your passed, failed and withdrawn units and the mark for each of those units.



# Academic calendar

Year/intake	Orientation*	Teaching starts	Break	Exams start	Exams end
<b>2026</b>					
<b>March</b>	16 – 20 Feb	23 Feb	3 Apr – 9 Apr	25 May	29 May
<b>June</b>	15 – 19 June	22 June	10 – 14 Aug	21 Sept	25 Sept
<b>October</b>	12 – 16 Oct	19 Oct	25 Dec – 7 Jan	25 Jan	29 Jan
<b>2027</b>					
<b>March</b>	15 – 19 Feb	22 Feb	25 Mar – 31 Mar	24 May	28 May
<b>June</b>	14 – 18 June	21 June	June 9 – 13 Aug	20 Sept	24 Sept
<b>October</b>	11 – 15 Oct	18 Oct	23 Dec – 5 Jan	24 Jan	28 Jan

\*Information regarding your orientation and the days and times allocated for your enrolment will be outlined in your offer pack.

# How to apply to Deakin College

Students can apply through a Deakin College Study Agent or directly via our online application form.

## International students who are applying to Deakin College from overseas

### Apply direct

You can apply directly to Deakin College using the Student Application Portal at: [deakincollege.edu.au/how-apply](https://deakincollege.edu.au/how-apply)

### Apply via an education agent

Deakin College appoints education agents around the world who can help you with your application to our courses as well as offer assistance for your student visa. For information on authorised education agents, visit:

[deakincollege.edu.au/how-apply/international/find-agent](https://deakincollege.edu.au/how-apply/international/find-agent)

For more information on the application process for international students, visit: [deakincollege.edu.au/how-apply/international/application-process](https://deakincollege.edu.au/how-apply/international/application-process)

## How to accept your offer as an international student

We have put together an easy step-by-step guide on how to accept your offer.

### STEP 1: Understand your Letter of Offer

Your Letter of Offer contains some key pieces of information about the course you are receiving an offer for including:

- Course name
- The duration of the course
- Commencement dates
- Tuition fees, and conditions of the offer.

### STEP 2: Complete your forms

Next, you will have to complete the Student Acceptance and Payment Agreement form and return it to Deakin College along with your payment.

Once we receive your form, we will provide you with a package that contains:

- Your receipt
- Information regarding the compulsory Orientation and Enrolment program
- Your Confirmation of Enrolment letter (CoE), required to apply for your student visa. If you are under 18, you will also receive information about our Under-18 guardianship program and the required form to apply for your student visa. For more information on accepting your offer, visit:

[deakincollege.edu.au/how-apply/international/accept](https://deakincollege.edu.au/how-apply/international/accept)

### STEP 3: Payment of fees

Your offer letter outlines the fees payable before commencing at Deakin College. To secure your place, you will need to pay a portion of your course fees plus the Overseas Student Health Cover Charge, if it applies to you.

Payment is in Australian dollars.

Please include your Deakin College Student ID (in the Letter of Offer).

To find out more about your payment options, go to:

[deakincollege.edu.au/how-apply/international/fees-payment](https://deakincollege.edu.au/how-apply/international/fees-payment)

## Student visas

International students studying in Australia are required to hold a valid student visa during their course of study. Student visas are issued based on meeting requirements and generally have certain conditions attached to them. For more information visit:

[immi.homeaffairs.gov.au/visas/getting-a-visa/visa-finder/study](https://immi.homeaffairs.gov.au/visas/getting-a-visa/visa-finder/study)





# Scholarships

## Deakin College International Scholarships

Deakin College offers tuition fee scholarships to international students from particular countries. The scholarship is valued at between 10%-20% of total Foundation and/or Diploma tuition fees.

## Navitas family bursaries

Navitas offers financial support in the form of family bursaries. A bursary applies where two or more students from the same family study with a Navitas member institution\*. The bursary is equivalent to 10% of the tuition fee of your program of study.†

More information about bursaries and scholarships can be found at:

[deakincollege.edu.au/scholarships](https://deakincollege.edu.au/scholarships)



# Deakin College

## Postal address

Deakin College at Deakin University  
221 Burwood Highway, Burwood VIC 3125 Australia  
E [deakincollege@deakin.edu.au](mailto:deakincollege@deakin.edu.au)

## Melbourne Burwood campus

Deakin College at Deakin University  
70 Elgar Road (Entrance 3)  
Building LA, Level 4, Burwood VIC 3125 Australia  
T +61 3 9244 5197 F +61 3 9244 5198

## Geelong Waterfront campus

Deakin College at Deakin University  
Building C, Level 2, Room C2.002  
27 Brougham Street, Geelong VIC 3220 Australia  
T +61 3 5227 2890 F +61 3 5227 2310

## Geelong Wairn Ponds campus

Deakin College at Deakin University  
Building KA, Level 4  
Pigdons Road, Wairn Ponds VIC 3216 Australia  
T +61 3 5227 3433 F +61 3 5227 2310

**DEAKIN  
COLLEGE**  
in association with



[deakincollege.edu.au](http://deakincollege.edu.au)

The information contained in this brochure is correct at the time of publication; however, Deakin College reserves the right to alter, amend or delete details at any time without notice. For the most up-to-date course information please visit [deakincollege.edu.au](http://deakincollege.edu.au). Photographs in this publication are subject to copyright. This brochure is provided free of charge. Printed October 2024. DC250905-0747

Melbourne Institute of Business and Technology Pty Ltd trading as Deakin College;  
ABN 11 074 633 668. National Code: 3946; CRICOS Provider Codes: Deakin College  
01590J, Deakin University 00113B.